

USER MANUAL for USB to serial converter (PL2303)

The USB to RS-232 Serial Adapter provides an external plug & play RS-232 serial connection with your computer, letting you free up your existing serial port. Users have the capability to utilize the adapter with serial port interface in an easy-to-use environment. The adapter is designed for connections to Cellular Phones, PDAs, Digital Cameras, Modems, or ISDN Terminal Adapters through USB port with over 600 kbps data transfer rate. Installation is very easy. Just simply connect a serial device to the USB to RS-232 adapter and plug the USB port into the computer.

Features

- Support automatic handshake mode over 600kbps data transfer rate
- Support remote wake-up and power management 96 byte buffer each for upstream and downstream data flow
- Easy Installation
- Work with Cellular Phones, PDAs, Digital Cameras, Modems, and ISDN terminal adapters...etc.
- Frees your RS-232 port for other uses
- No IRQs required, no IRQ conflicts
- Full compliance with the USB specification Revision 1.1

Specification

- Each blister contains one USB to serial converter; one CD driver with user' manual
- Cable Length : Total 45 cm
- Connectors: USB type A plug; RS-232 DB-9 Male
- Data Transfer Rate : 600 kbps
- OS supported : Win 98SE/2000/ME/XP; Mac OS 9.0 or above

USB to serial converter (PL2303)

Driver Installation Under Windows 98/ME/2000/XP -page 02~03

Driver Un-installation Under Windows 98/ME/2000/XP -page 04~05

Driver Installation Under MAC OSX 8.6~9.x -page 06~07

Driver Installation Under MAC OSX 10.1.x~10.3.x -page 08~11

Driver Installation Under Linux -page 12~12

Q&A -page 13~14

USER MANUAL for USB to serial converter (PL2303)

Driver Installation Under Windows 98/ME/2000/XP

1. **Step 1:** **Don't** Plug in the USB type A receptacle of the cable to the USB connector of your computer.

Step 2: Place the enclosed CD Driver into the CD ROM. to search for “PL-2303 Driver Installer

Step 3: Click “**PL-2303 Driver Installer**”

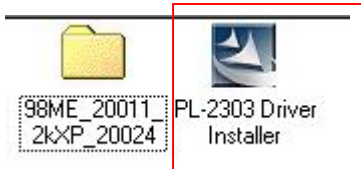


Figure 1

2. Select ‘ Search for the best driver for your device’ and click “next”. See Figure 2.

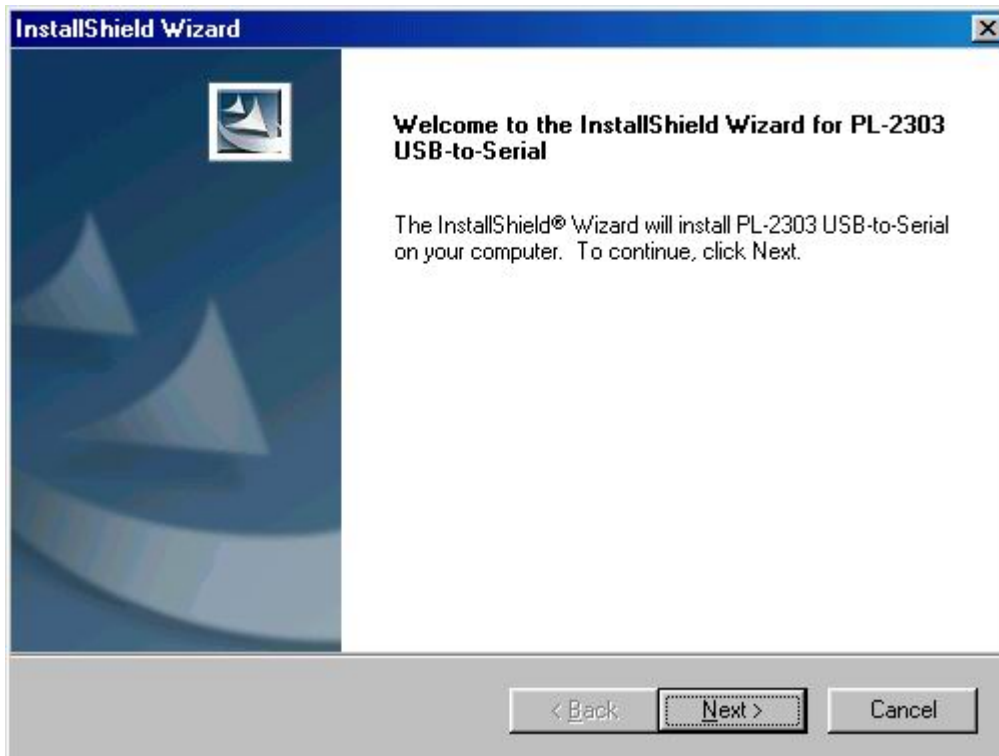


Figure 2

3. Windows has finished installing the software, click “Finish” to close the Wizard. See Figure 3

USER MANUAL for USB to serial converter (PL2303)

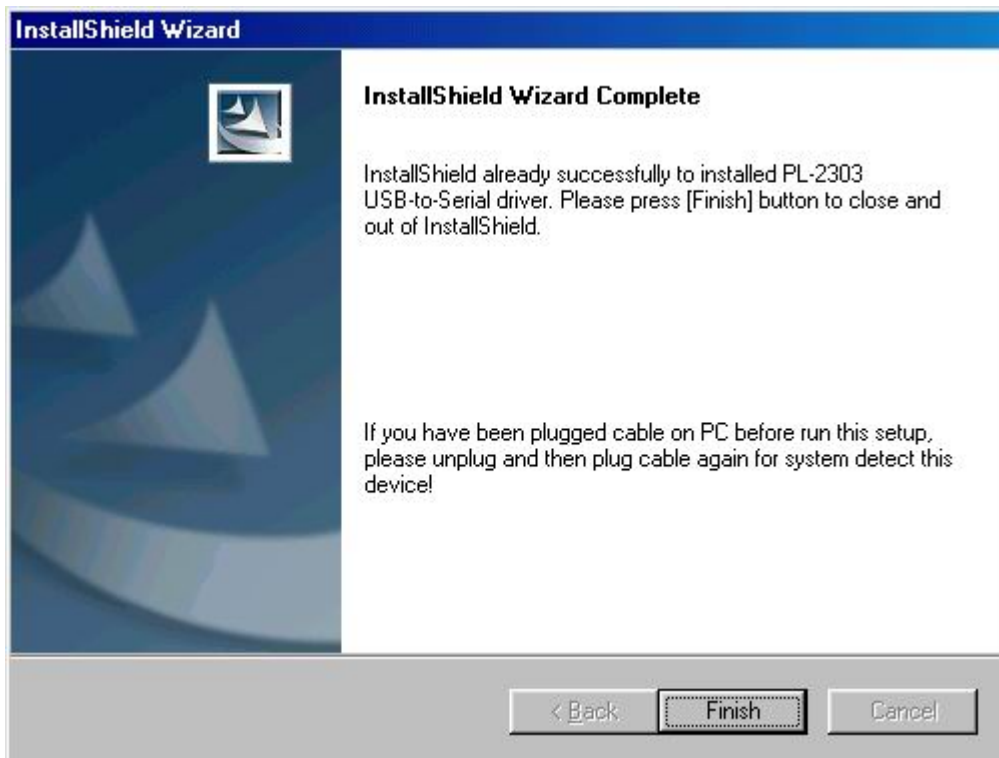


Figure 3

4. **Plug USB/Serial cable into your computer's USB port.**
5. Open "Device Manager" under System Properties and check if there is the device you install under "USB to Serial (COM3)".See Figure 4

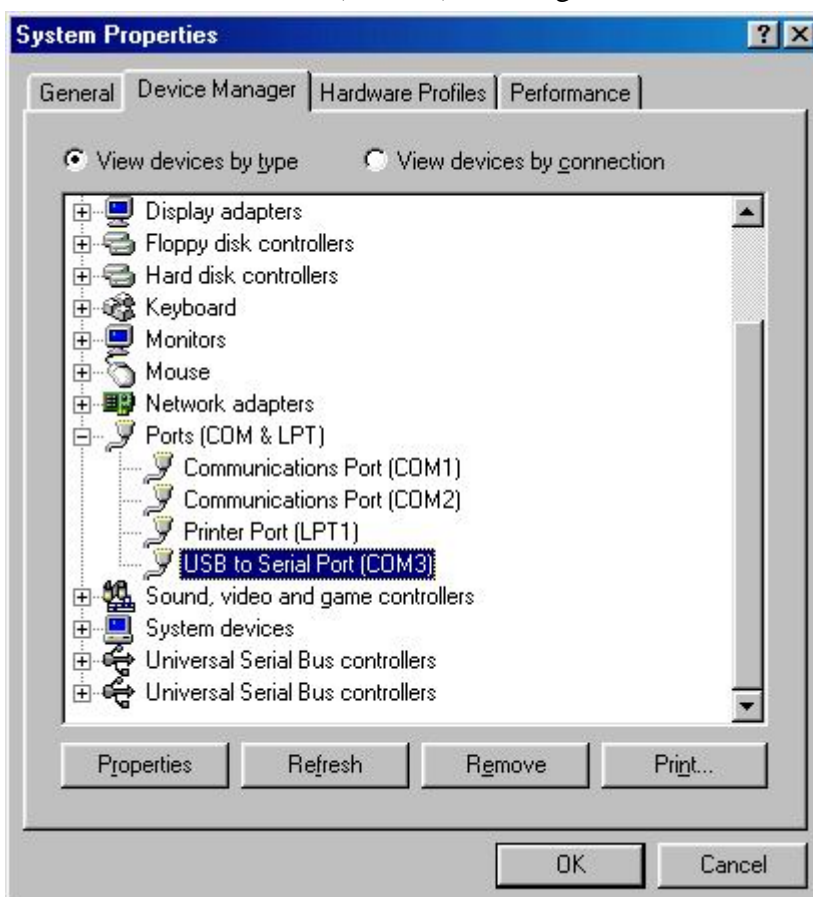
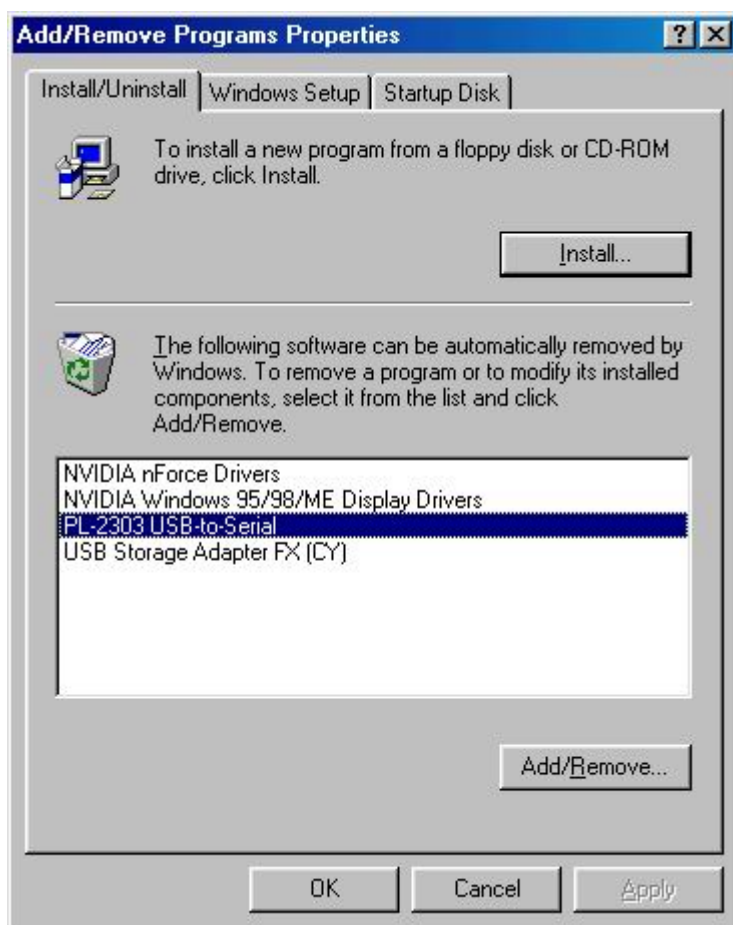


Figure 4

USER MANUAL for USB to serial converter (PL2303)

1.1. Two Kinds of methods for Un-installment under win 98SE/ME/2000/xp

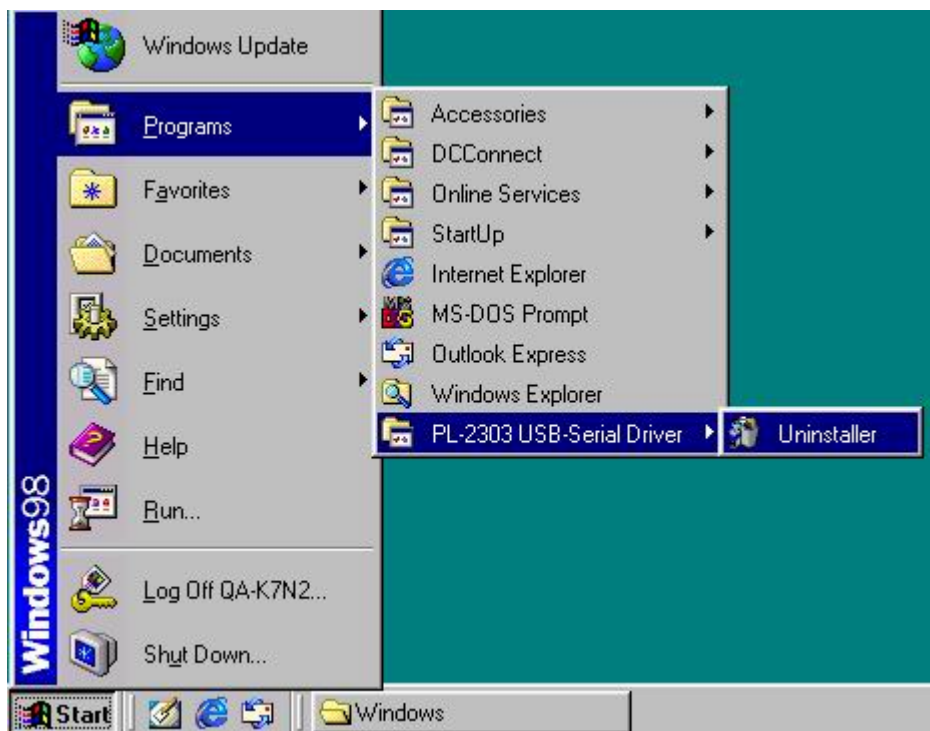
Method 1. Select “PL2303 USB-to-Serial” and then click “**Add/Remove to uninstall.**”



Method 2

1. Click start programs PL2303 USB-to-Serial Driver Uninstaller

USER MANUAL for USB to serial converter (PL2303)





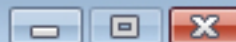
Computer



Recycle Bin



AutoPlay



DVD-RW Drive (F:) 07-03-28
AM-01



Always do this for software and games:

Install or run program



Run autorun.exe
Publisher not specified

General options



Open folder to view files
using Windows Explorer

[Set AutoPlay defaults in Control Panel](#)

Windows Vista (TM) Beta 2

Evaluation copy. Build 5472.winmain_idx01.060713-1900



AutoPlay



Untitled - Paint



3:58 PM



USB Version V1.1

Untitled - Paint



4:00 PM

Computer

Recycle Bin

Documents

Pictures

Music

Recently Changed

Searches

Folders

10 items

« USB Version V1.1 »

Search

Organize Views Burn to disc

Name	Size	Type	Date modified	Location
Files Currently on the Disc (10)				
USB Dual 2 Serial(DB-9M) Cable	File Folder	USB Dual Serial(DB-9M)+Parallel(DB2...	File Folder	
USB To Audio (Virtual 7.1CH) Cable	File Folder	USB To Parallel Cable(CN36M.DB25F)	File Folder	
USB To RJ45 Ethernet Cable	File Folder	USB To SCSI Cable(50 Pin)	File Folder	
USB To Serial Cable(DB-9M)FTDI Chip	File Folder	USB To Serial Cable(DB-9M.DB-25)Prolific...	File Folder	
USB To USB Network Cable	File Folder	USB To USB Datalink Cable	File Folder	



USB Version V1.1

Untitled - Paint



4:00 PM



USB To Serial Cable(...)

Untitled - Paint

Computer

Recycle Bin

Organize

Views

Burn to disc

Favorite Links

Documents

Pictures

Music

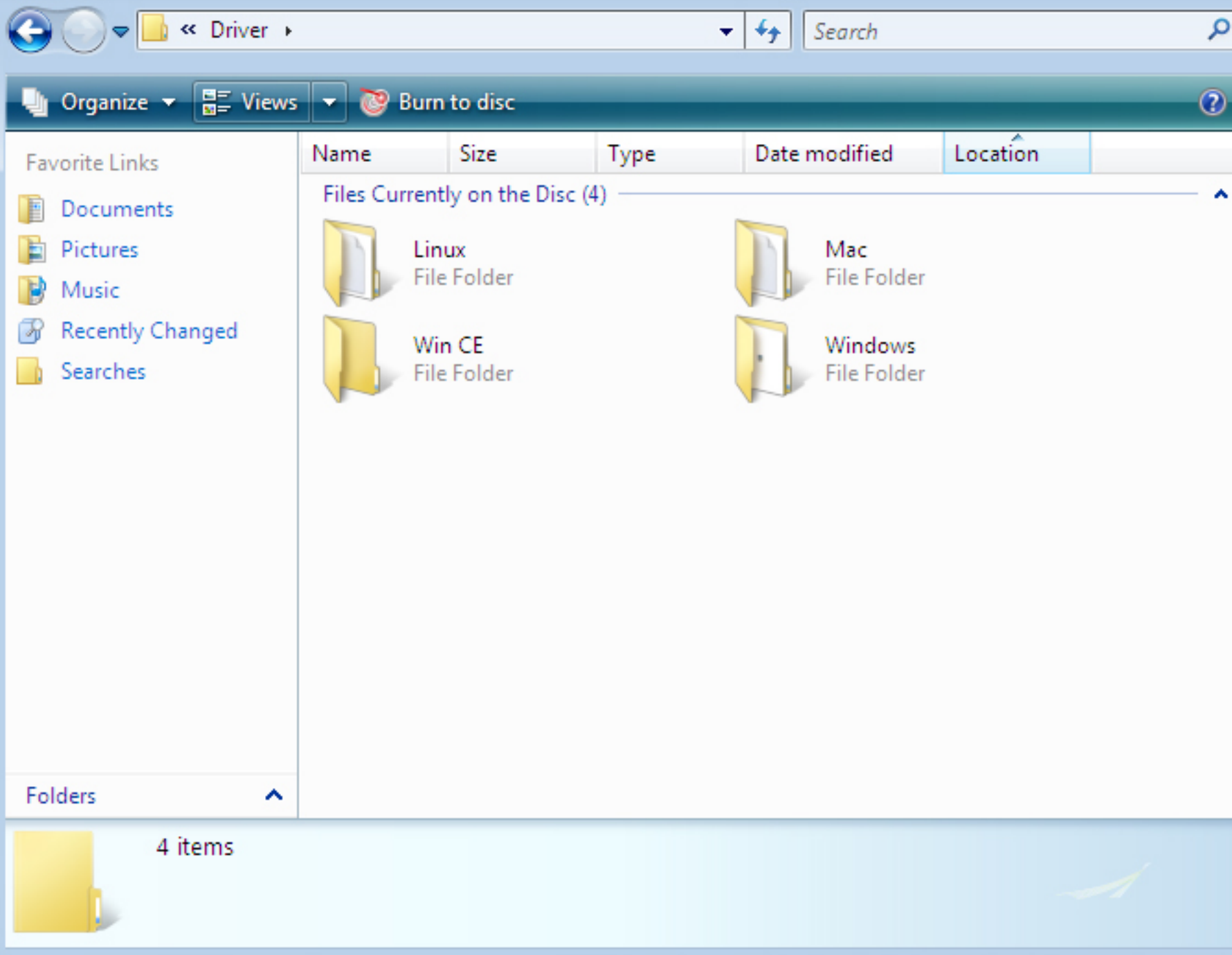
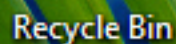
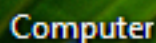
Recently Changed

Searches

Folders

3 items

Name	Size	Type	Date modified	Location
Files Currently on the Disc (3)				
Driver		File Folder		Image
Manual		File Folder		





Computer



Recycle Bin



Windows

Untitled - Paint

4:01 PM

<< Driver > Windows >

Search

Organize

Views

Burn to disc

Favorite Links

Documents

Pictures

Music

Recently Changed

Searches

Folders

4 items

Name	Size	Type	Date modified	Location
Files Currently on the Disc (4)				
	98ME_20011_2kXP_20024	File Folder		
	Windows_Vista	File Folder		
	Windows 64-bit	File Folder		
	Win 98-XP Driver Installer	Prolific Technology Inc		



<< Driver > Windows > Windows_Vista

Organize Views Burn to disc

Favorite Links

Documents

Pictures

Music

Recently Changed

Searches

Folders

Name	Size	Type	Date modified	Location
Files Currently on the Disc (1)				
	PL-2303HXD Vista Driver Installer Setup.exe			

PL-2303HXD Vista Driver Installer

Application

Date modified: 3/16/2007 1:51 AM

Size: 1.96 MB

Date created: 3/16/2007 1:51 AM



Recycle Bin



Windows_Vista

Untitled - Paint

PL-2303HXD Vist...



4:04 PM

Computer

Recycle Bin

Document

Picture

Music

Recent

Search

Folders

PL-2303HXD Vista Driver Installer - InstallShield Wizard

Preparing Setup

Please wait while the InstallShield Wizard prepares the setup.

PL-2303HXD Vista Driver Installer Setup is preparing the InstallShield Wizard, which will guide you through the rest of the setup process. Please wait.

InstallShield

Cancel

PL-2303HXD Vista Driver Installer

Date modified: 3/16/2007 1:51 AM

Application

Size: 1.96 MB

Date created: 3/16/2007 1:51 AM



Computer



Recycle Bin

PL-2303HXD Vista Driver Installer - InstallShield Wizard



**Welcome to the InstallShield Wizard for
PL-2303HXD Vista Driver Installer**

The InstallShield® Wizard will install PL-2303HXD Vista
Driver Installer on your computer. To continue, click Next.

< Back

Next >

Cancel

Windows Vista (TM) Beta 2
Evaluation copy. Build 5472.winmain_idx01.060713-1900



Windows_Vista



Untitled - Paint



PL-2303HXD Vist...



4:05 PM



Computer



Recycle Bin

PL-2303HXD Vista Driver Installer - InstallShield Wizard

License Agreement

Please read the following license agreement carefully.

End User License Agreement ("EULA")

Do not install or use the software until you have read and accepted all of the license terms. Permission to use the software is conditional upon your agreeing to the license terms. Installation or use of the software by you will be deemed to be acceptance of the license terms. Acceptance will bind you to the license terms in a legally enforceable contract with Prolific Technology Inc.

*** SOFTWARE LICENSE AND LIMITED WARRANTY**

This is an agreement between you, the end user, and Prolific Technology Inc. ("Prolific"). By using this software, you agree to become bound by the terms of this agreement.

IF YOU DO NOT AGREE TO THE TERMS OF THIS AGREEMENT, DO NOT USE THIS

- ☒ I accept the terms of the license agreement
- ☐ I do not accept the terms of the license agreement

Print

InstallShield

< Back

Next >

Cancel

Windows Vista (TM) Beta 2

Evaluation copy. Build 5472.winmain_idx01.060713-1900



Windows_Vista



Untitled - Paint



PL-2303HXD Vist...



4:05 PM



Computer



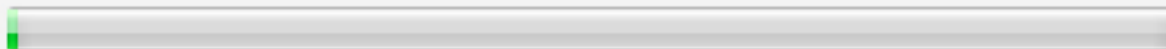
Recycle Bin

PL-2303HXD Vista Driver Installer - InstallShield Wizard



Setup Status

PL-2303HXD Vista Driver Installer is configuring your new software installation.



InstallShield

Cancel

Windows Vista (TM) Beta 2
Evaluation copy. Build 5472.winmain_idx01.060713-1900



Windows_Vista



Untitled - Paint



PL-2303HXD Vist...



4:07 PM



Computer



Recycle Bin

PL-2303HXD Vista Driver Installer - InstallShield Wizard



InstallShield Wizard Complete

The InstallShield Wizard has successfully installed PL-2303HXD Vista Driver Installer. Click Finish to exit the wizard.

< Back

Finish

Cancel

Windows Vista (TM) Beta 2
Evaluation copy. Build 5472.winmain_idx01.060713-1900



Windows_Vista



Untitled - Paint



PL-2303HXD Vist...



4:06 PM

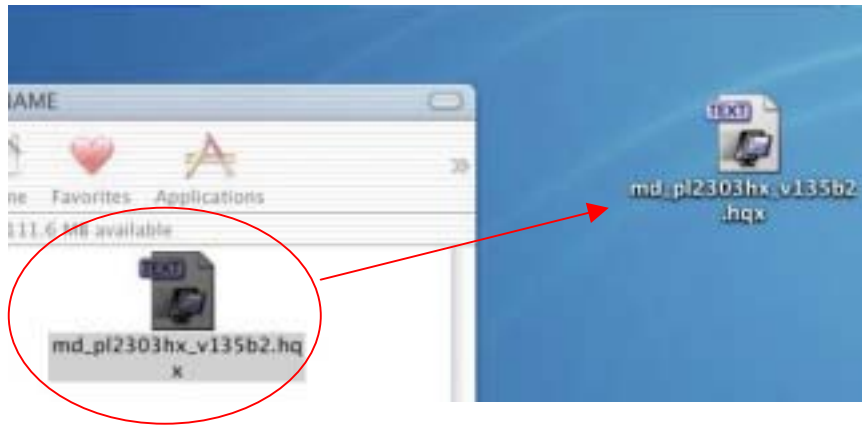
USER MANUAL for USB to serial converter (PL2303)

Driver installation Under MAC

- MAC 8.6~9.0

For 8.6 MAC USB/Serial Cable Setup

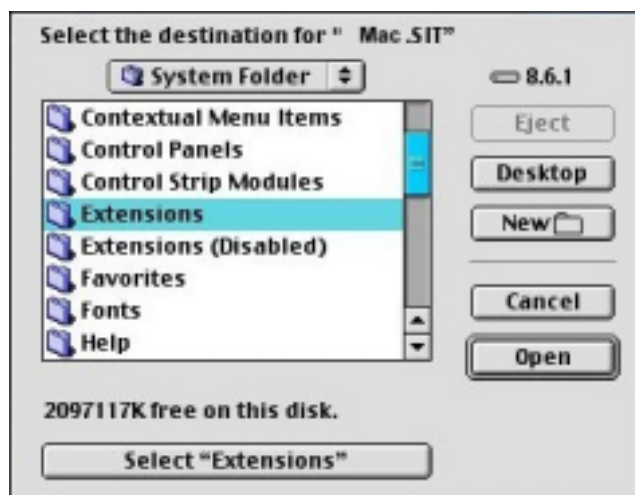
Step 1. Insert CD disk, Copy “md_pl2303hx_v135b2.hqx” file to desktop.



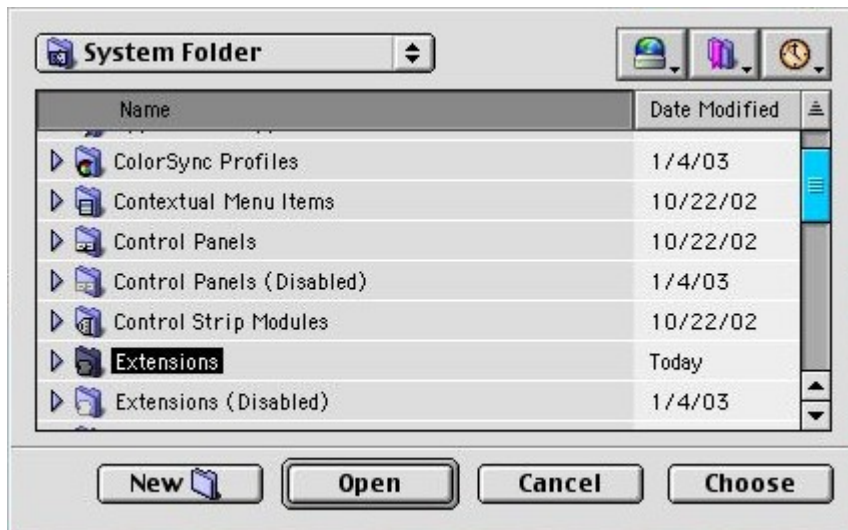
Step 2. Click OK



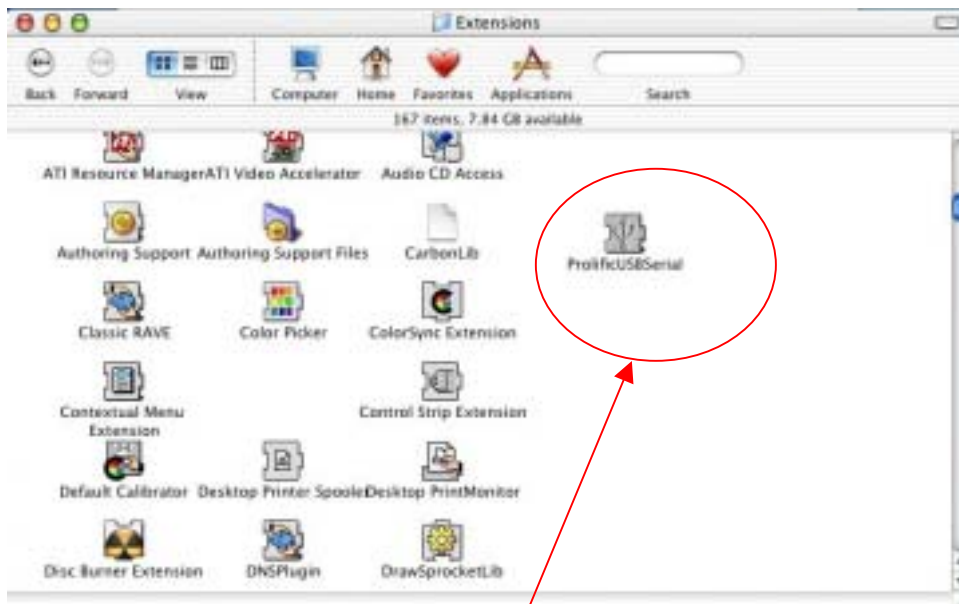
Step 3. Click system folder > Extension, and click “choose”. or select “Extensions”



USER MANUAL for USB to serial converter (PL2303)



Step 4. Drag file “ProlificUSBSerial” into system **Extensions** (Apple Extras), and then restart



your computer. (As picture shows)

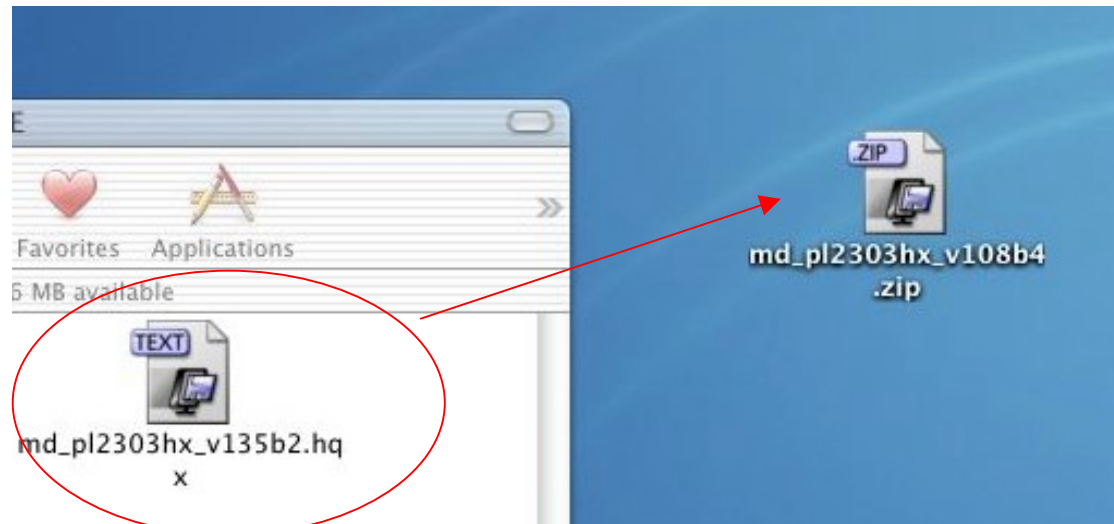
Step 5. Plug USB/Serial cable into your computer's USB port

USER MANUAL for USB to serial converter (PL2303)

■ 10.1.x and 10.3.x

For 10.1.x MAC USB/Serial Cable Setup

Step 1. Insert CD disk, copy file to desktop.



Step 2 choose **PL2303_1_0_8b4.pkg** and click it



Step 3. Click “continue .”

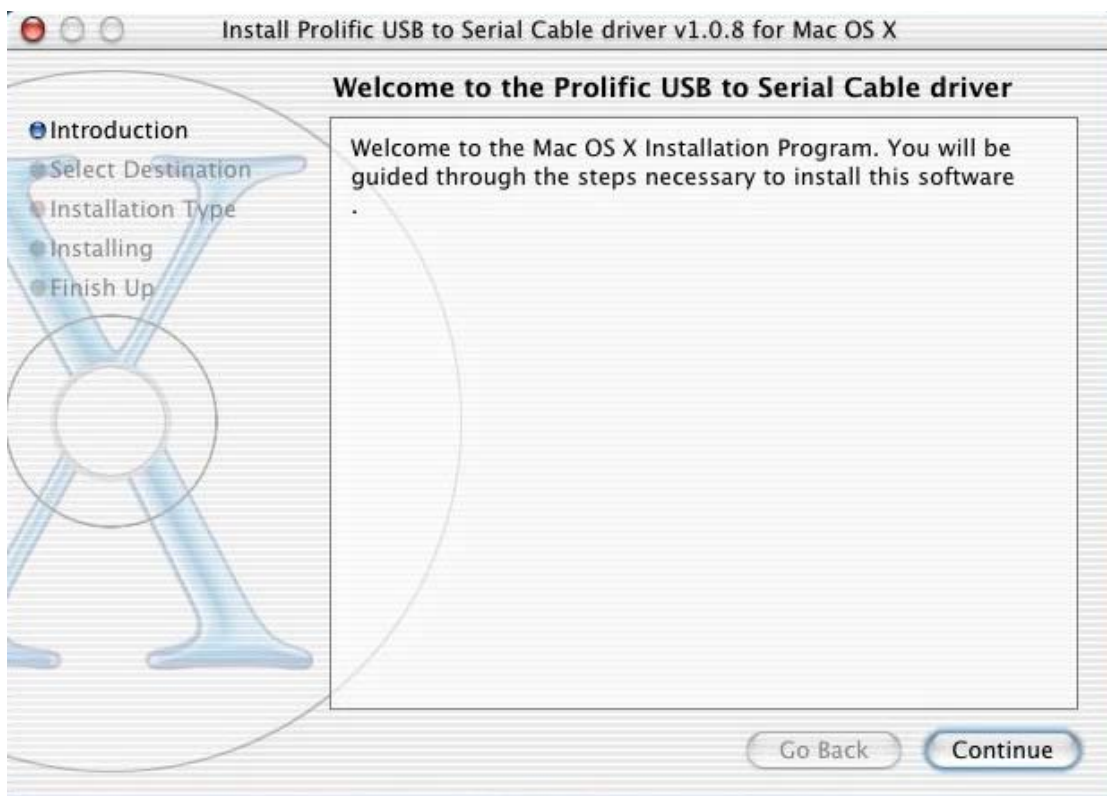


Step 4. Please key-in password then click “ok”

USER MANUAL for USB to serial converter (PL2303)



Step 5. Click "Continue"

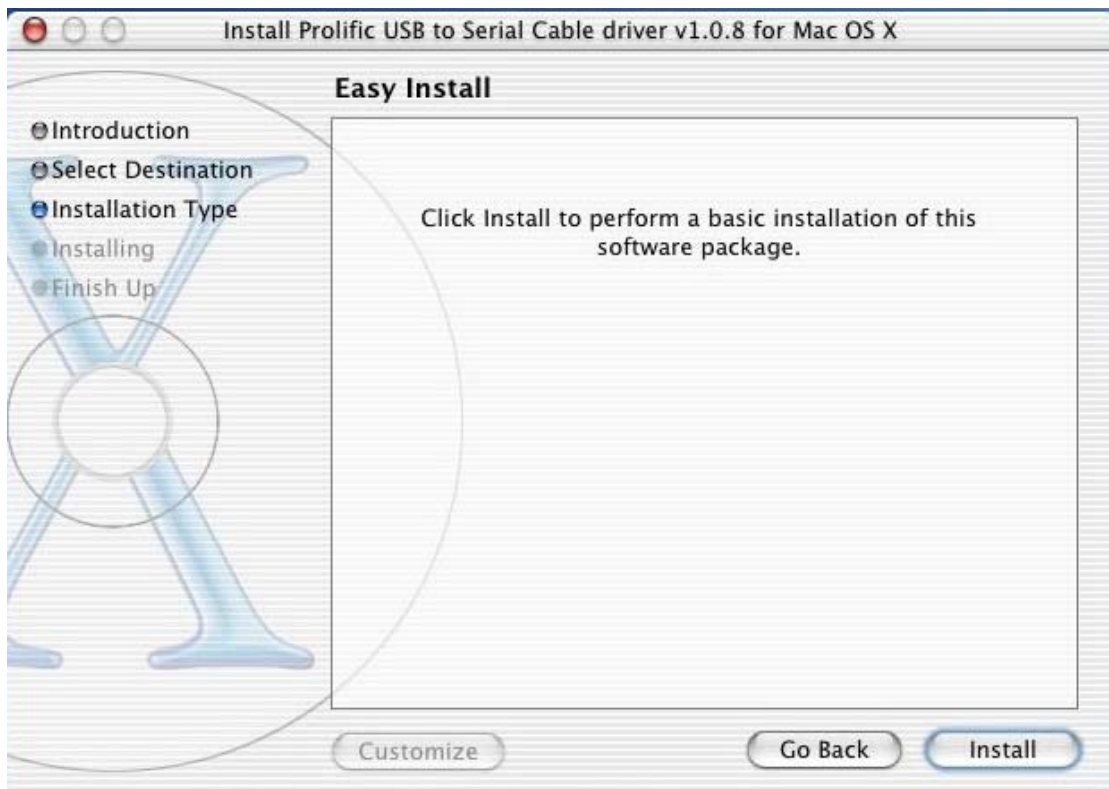


Step 6. Please select a destination volume to install the Prolific USB Serial .then click
"Continue"

USER MANUAL for USB to serial converter (PL2303)



Step 7. Click "install"



Step 8. Drag file "ProlificUSBSerial" into system extension (Apple Extras), and then restart

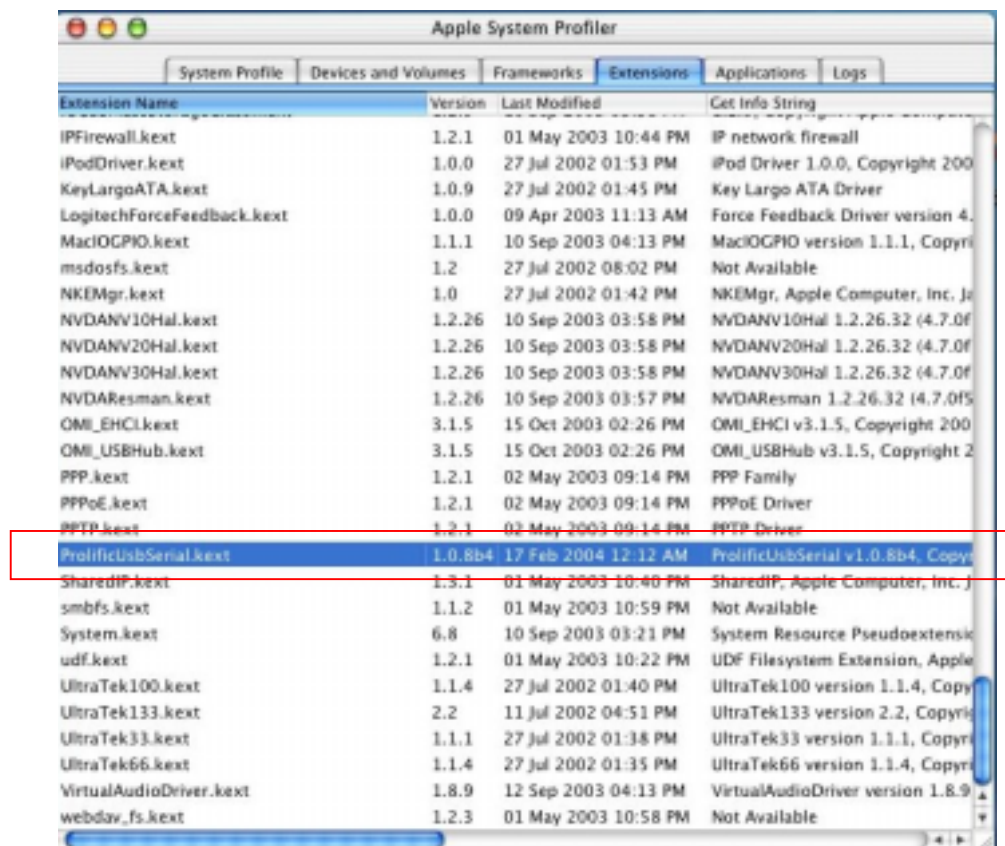
USER MANUAL for USB to serial converter (PL2303)



Step 9. Plug USB/Serial cable into your computer's USB port

Step 10. You may check the "driver" under "Apple System Profiler".

If they are the same as shown below, congratulations, the installation is done successfully.



USER MANUAL for USB to serial converter (PL2303)

● Linux

Step:

1. Under root folder, create a new folder and copy PL-2303 source code to new folder.
2. Open "Makefile" with GEDIT or KATE under new folder.
3. Modify line 5 "KINCLUDES=/usr/src/linux/include".
Example: "KINCLUDES=/usr/src/linux-2.4.7-10/include".
You could find folder name on Linux.
4. Open terminal mode and login root user.
5. Go to the new folder and then type "make all" to compile the PL-2303 source code. This will create two files: "pl2303.o" and "usbserial.o".
6. Type "make inst" that will install the PL-2303 Linux driver into Linux.
7. Plug the PL-2303 cable into USB port and key-in "dmesg", it will show "Prolific USB Serial Adapter converter now attached to ttyUSB0 (orusb/tts/0 for devfs)". This means the cable is now working under Linux.

Note: You must login into root user in order to successfully compile and install.

B. only explain how to link the device with our PL2303 driver.

Step:

- (1) In Makefile file, we have set a command to insert driver into Kernel, type "make inst" to insert driver.
- (2) After that, type "dmesg" command then click enter.
- (3) You will see messages appearing on the screen:
"usbserial.c" Prolific USB Serial Adapter converter now attached to ttyUSB0 (orusb/tts/0 for devfs)".

This means the virtual COM port is in ttyUSB0, so if you want to use this port, you need to use "ln" command to hard link with the device.

For example:

You are using PL-2303 to connect with modem. So you need to type 'ln -b /dev/ttyUSB0 /dev/modem' then click enter. If nothing happens and the screen appears as '[root@localhost / xxxxx]#', the link operation is successful. Please make sure that the modem has been properly installed in system.

Now the modem will use the PL-2303 port to do communication, you can try to use Minimum (Red Hat 7.1) AP to test.

USER MANUAL for USB to serial converter (PL2303)

PL-2303 MAC X driver FAQ

=====

FAQ

Q1: How do I install the PL-2303 MAC X driver?

A: First, download the PL-2303 MAC X driver from our support website. Then, uncompress the .zip file and executing the .pkg file. This will install the driver automatically.

Note: You need to restart the computer after installing the Mac X driver. The PL-2303 Mac X driver only supports V10.1.X so you need to upgrade first your OS X by SOFTWARE UPGRADE.

Q2: How do I test the PL-2303 MAC X driver?

A: You can test all COM port devices for MAC X except serial keyboard and mouse since these devices are not supported.

For example serial modem:

1. Set modem using PL-2303 COM port.
2. Set your modem model.
3. Execute REMOTE ACCESS to connect to the internet.

Q3: How do I uninstall the PL-2303 MAC X driver?

A:

1. Open "Applications-> Utilities-> Terminal"
(Need to create ID & password first on NetInfo Manager)
2. Login to root user , to type "su" , input password
3. To type "cd /System/Library/Extensions" to enter "Extensions" folder.
4. Unload driver (if had been loaded) , to type "kextunload PL2303.kext" or "kextunload ProlificUsbSerial.kext".
5. Remove driver , to type "rm -r PL2303.kext" or "rm -r ProlificUsbSerial.kext".

Q4: After I completed installation of the PL-2303 MAC X driver under OS 10.2, a warning will appear saying that "Prolific USB Serial. kext" has problems and there are three buttons that can be selected.

USER MANUAL for USB to serial converter (PL2303)

What does this problem mean?

A: This problem occurs because the PL-2303 MAC X driver was compiled under OS 10.1.X. So when you install the driver under OS 10.2, it will show this warning message. User just need to select the "Fix and Use" button to make it work under OS 10.2.X.